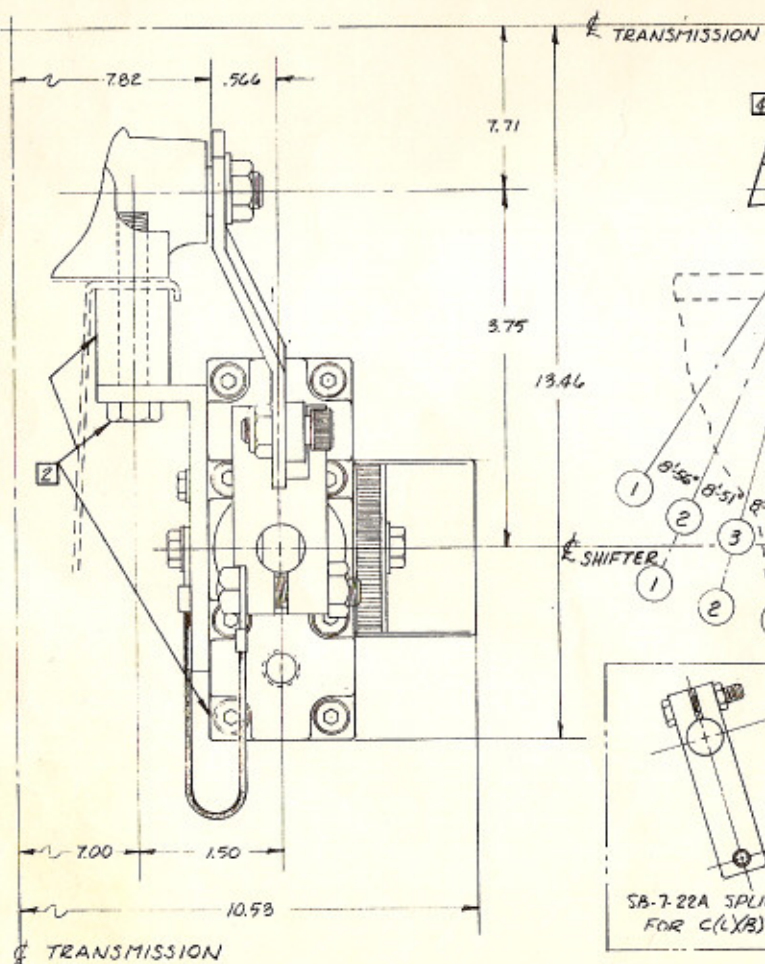
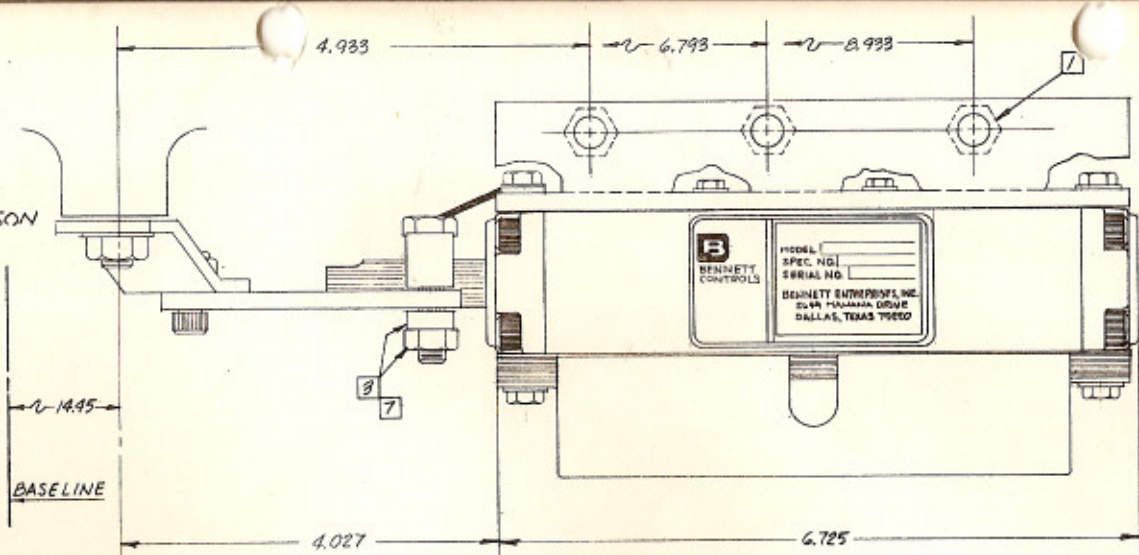


NOTES:

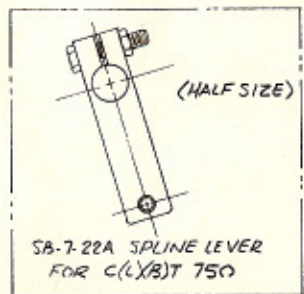
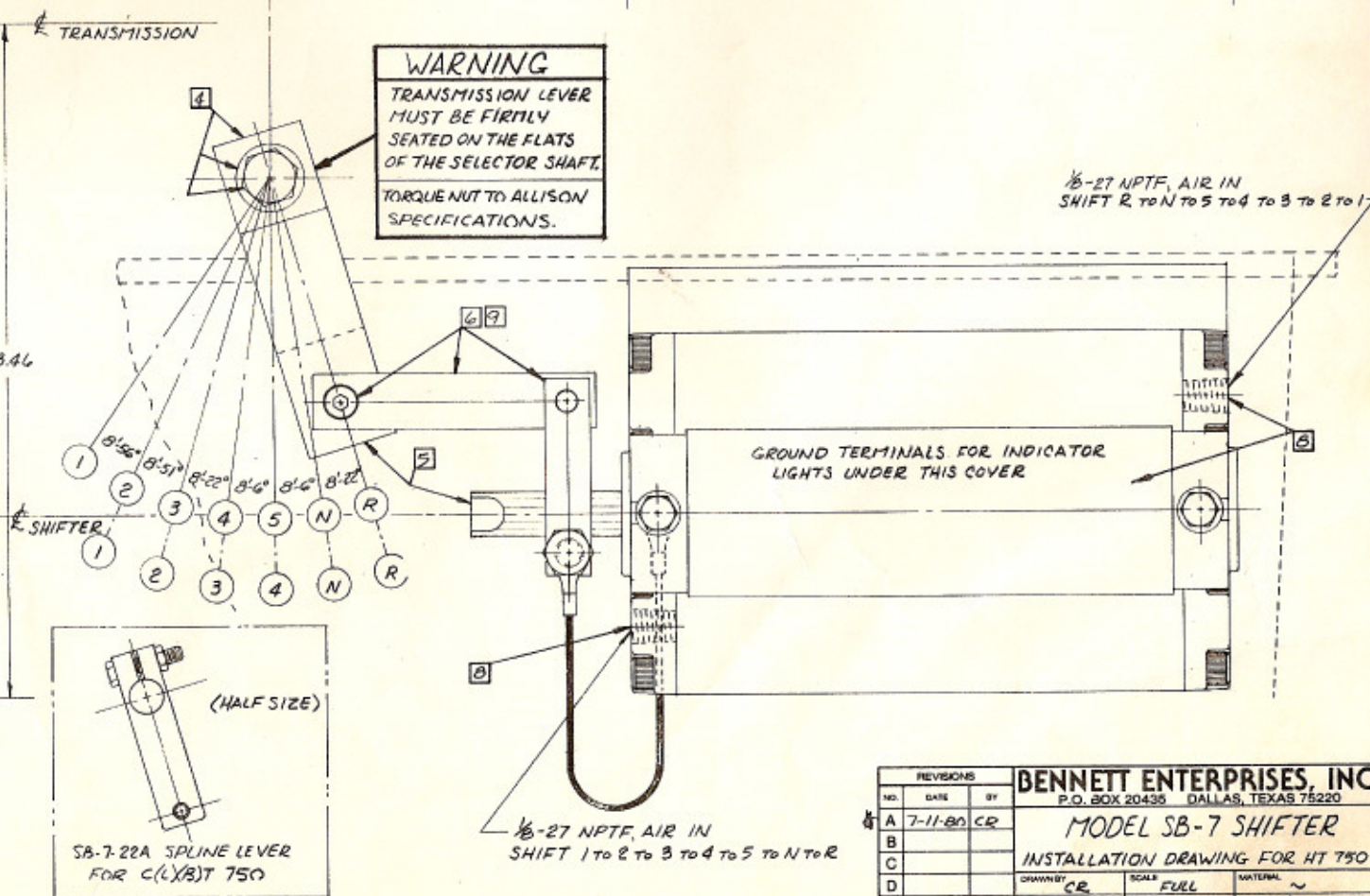
1. ALL DIMENSIONS SHOWN FOR REFERENCE ONLY.

INSTALLATION INSTRUCTIONS:

1. REMOVE OILPAN MOUNTING BOLTS (B) AND DISCARD.
2. INSTALL SHIFTER USING 1" SPACER AND 3/8"-18 UNC X 1 3/4" BOLTS (3) SUPPLIED. TORQUE BOLTS TO 13-15 LBS.-FT.
3. LOOSEN CLAMP LEVER NUT.
4. INSTALL TRANSMISSION LEVER ON RANGE SELECTOR VALVE SHAFT USING 3/8" I.D. WASHER AND NUT SUPPLIED. TORQUE NUT TO ALLISON SPECIFICATIONS.
5. PUSH SHIFTER SHAFT TO ITS FULLEST INWARD POSITION AND ROTATE RANGE SELECTOR VALVE SHAFT COUNTER-CLOCKWISE UNTIL TRANSMISSION IS IN REVERSE (LAST DETENT).
6. ADJUST CLAMP LEVER SO THAT LEVER IS VERTICAL AND LINK IS FREE ON SHOULDER BOLT.
7. TIGHTEN CLAMP LEVER NUT. TORQUE TO 30-35 LBS.-FT.
8. CONNECT AIR LINES AND INDICATOR LIGHT WIRES.
9. SHIFT TRANSMISSION THRU ALL RANGES, REPEAT STEPS 3, 6, AND 7 AS REQUIRED TO ENSURE THAT LINK IS FREE ON SHOULDER BOLT IN LOW AND REVERSE RANGES.



WARNING
 TRANSMISSION LEVER
 MUST BE FIRMLY
 SEATED ON THE FLATS
 OF THE SELECTOR SHAFT.
 TORQUE NUT TO ALLISON
 SPECIFICATIONS.



REVISIONS			BENNETT ENTERPRISES, INC.	
NO.	DATE	BY	P.O. BOX 20435 DALLAS, TEXAS 75220	
A	7-11-80	CR	MODEL SB-7 SHIFTER	
B			INSTALLATION DRAWING FOR HT 750	
C				
D			DRAWN BY CR	SCALE FULL
E			DATE 7-28-79	MATERIAL ~
F			PLATING ~	DRAWING NO. BE-SB7-B1